

Lyham Road, Brixton, SW2

4 bedroom flat - conversion for sale

£600,000

Share of Freehold

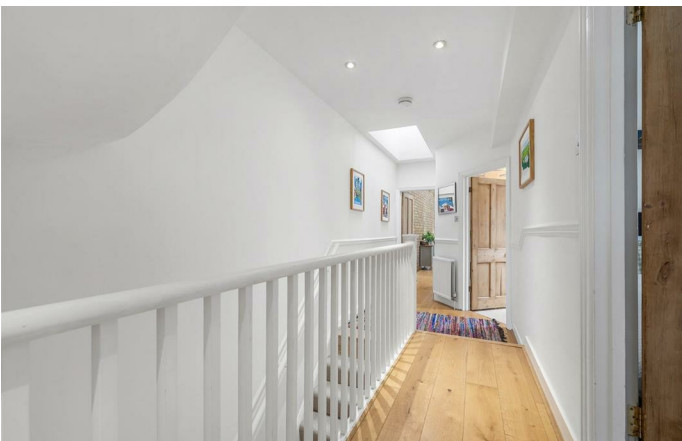
Property Details

An impressive four-bedroom maisonette, arranged over three spacious floors of a classic period property on Lyham Road. Boasting its own private entrance, the home is thoughtfully designed to maximise space and comfort. Located in a vibrant pocket of Brixton, it's moments from excellent transport links, green spaces, and a wealth of local amenities. The heart of the home is a stunning open-plan kitchen, dining, and reception room on the first floor, featuring an exposed brick feature wall, wooden flooring, vaulted ceilings with Velux windows, and sleek shaker kitchen. Ideal for entertaining, the space offers a seamless blend of style and functionality. Three bedrooms and a modern family bathroom are also found on the first floor, including a spacious principal bedroom and two versatile additional rooms. The top floor hosts a peaceful double bedroom and stylish shower room, offering excellent privacy. Ideally located between Clapham and Brixton, the home is within walking distance of Abbeville Village, Clapham High Street, Brixton Village, and Acre Lane. Transport links include the Northern and Victoria Lines and numerous bus routes.

Features

- Four bedrooms
- Victorian maisonette
- Own front door
- Over 1,000 square feet
- Modern open plan kitchen living room
- Loft extended
- Equidistant to Clapham and Brixton
- Local pub, cafe and shops a four-minute stroll
- Share of Freehold
- Chain-free

Council tax band C EPC rating D (61)



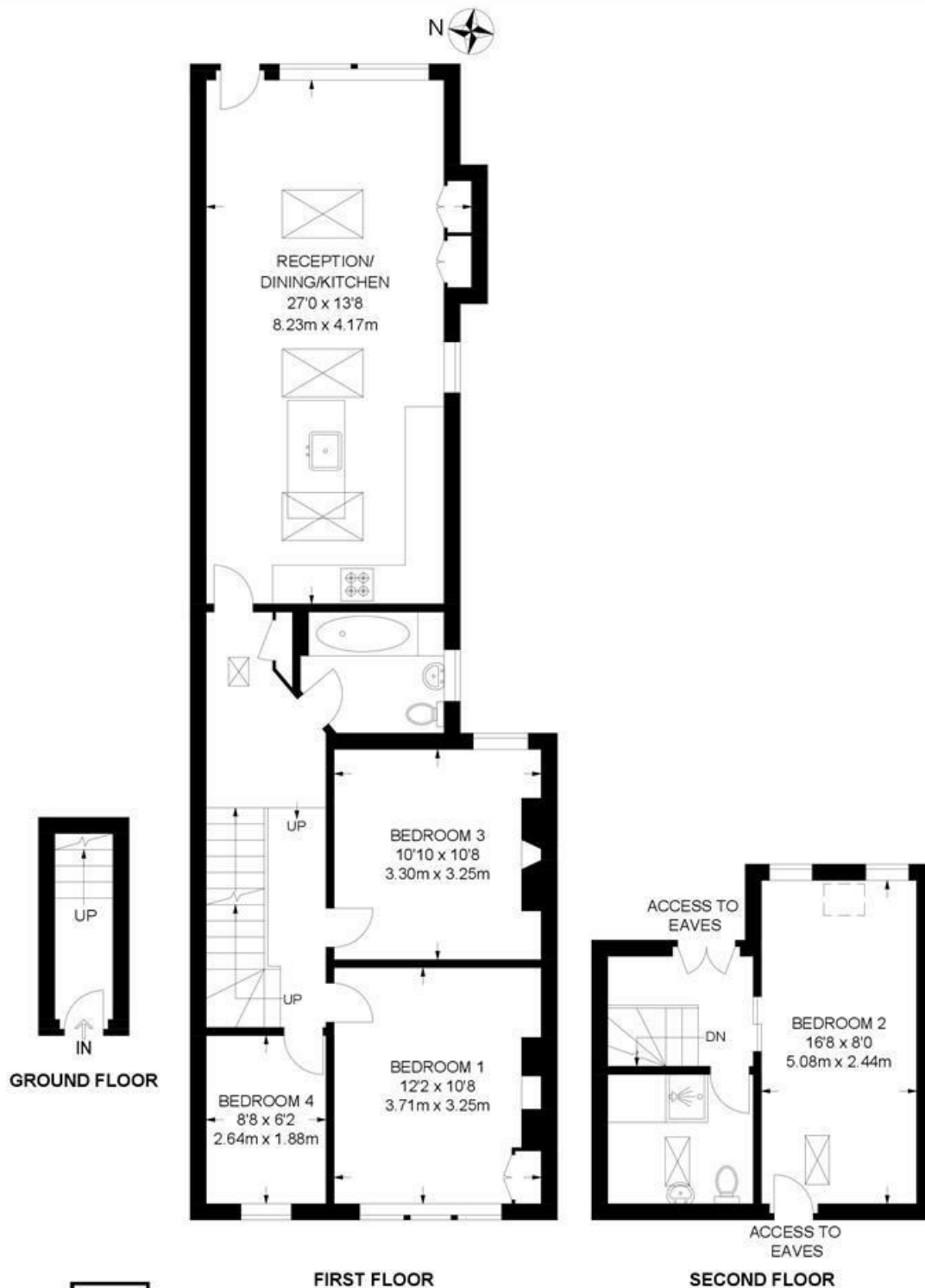


Lyham Road, Brixton, SW2

Lyham Road, SW2

4 Bedroom Flat

APPROXIMATE GROSS INTERNAL AREA: 1098 SQ FT / 102 SQ M



While we try our very best, floor plans are produced as a guide only and we take no responsibility for the precise accuracy with which any property is represented.

Lyham Road, Brixton, SW2

